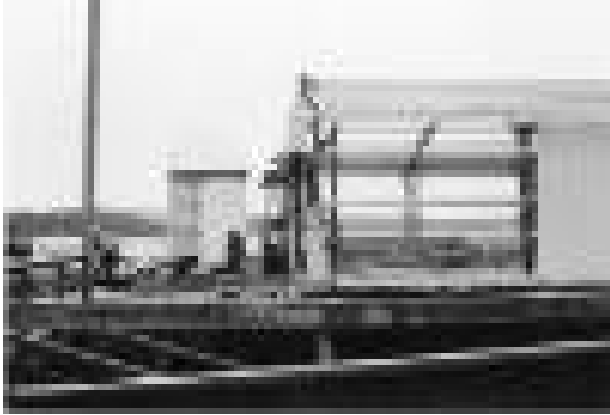


Basic Detail Report



Masset Wharf Expansion

Date

1969

Primary Maker

Phillips, H.B.

Medium

Prints

Description

Black and white photograph of the wharf expansion to meet the growing needs of Masset. The dock was extended and the two old wharf sheds were demolished and a new one took their place.

Dimensions

8.8 × 12.5 cm (3 7/16 × 4 15/16 in.)