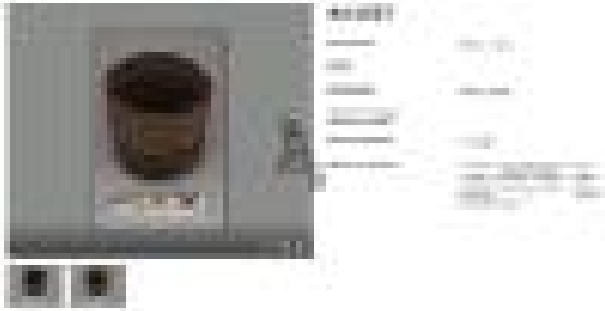


Basic Detail Report



Basket with False Embroidery

Date

1898

Medium

spruce root, mammal skin, grass

Description

basket of spruce root. straight sided flexible basket, circular in shape. plain twined weaving. imbricated design, 7cm wide, 3.5cm from rim, with dark yellow grasses. three bands, each band alternating right side up and inverted triangles around basket; bands separated by straight lines. short handles made of three skin thongs passing through opposite sides. base of basket darkened from use. (false embroidery design is called killerwhale teeth, half head of salmon berry). collected in Skidegate

Dimensions

Other: 21.5 × 26 cm (8 7/16 × 10 1/4 in.)