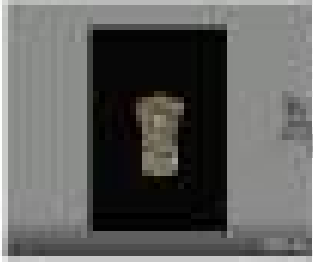


# Basic Detail Report

---



## Abalone Brooch

**Date**

1901

**Medium**

abalone, metal

**Description**

brooch made from one piece of abalone, shield shaped, border indented. top incised to represent an eagle head. clasp pin held in place by means of two hooked nails. collected in Skidegate

**Dimensions**

Other: 3.5 × 5.7 cm (1 3/8 × 2 1/4 in.)