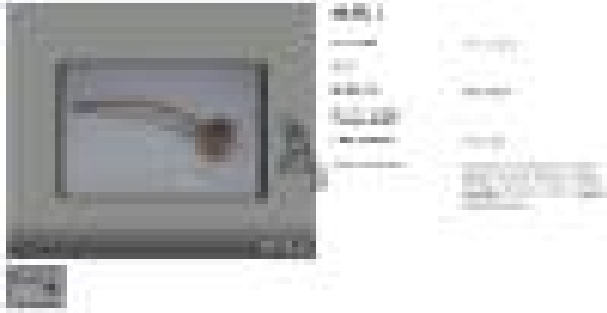


Basic Detail Report



Maul

Date

1895-1901

Medium

stone, wood, kelp

Description

grooved stone head lashed to wooden handle with strip of twwisted kelp. head pecked and ground from single piece of brown stone into roughly rectangular shape. distal end is larger than proximal end. wide central groove (5.2cm wide) cut to run parallel to ends extends to base. strip of kelp is lashed around base of platform and in groove of head. rectangular platform has handle shaft circular in cross section curving down from centrrre. carved into handle shaft are narrow longitudinal grooves.

Dimensions

Other: 59.3 cm (23 3/8 in.)