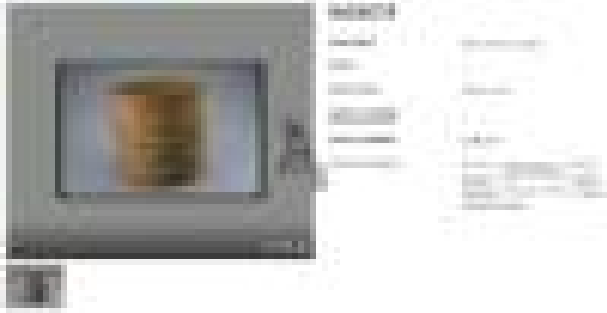


Basic Detail Report



Spruce Root Basket

Date

1915

Medium

spruce root, string, dye

Description

large basket of spruce root with alternating weft rows of z twining and checker work. geometric design of four horizontal bands encircling basket created by dyed, twined rows alternating with natural checker work rows. where base meets wall and rim is z twined only. collected in Skidegate

Dimensions

Other: 35 × 31.5 cm (13 3/4 × 12 3/8 in.)